

Administration

Board of Education

Mr. M. L. Robinson, Pres.

Dr. T. S. Clark

Mr. Guy Bendixon

Mr. L. J. Turley

Mr. R. Jordan

Mr. J. H. Brinkman, Secy.

Mrs. Mabel Wiegert, Treas.



Faculty



RALPH O. MORTENSEN
Superintendent
Social Science
World History



HAROLD SUTTON
7th Civics
8th Science
Biology
Assistant Coach



MRS. HAROLD SUTTON
Voc. Homemaking



MISS EDNA MARCUM
Principal
Literature
Latin



RICHARD MORRIS
Science
Mathematics



DALE SHIRES
Vocational Agriculture

This page sponsored by O. B. OLERICH, POLAND CHINA SWINE, Rolfe, Iowa



WILLIAM KLOSTER
Instrumental Music

MISS AVERIL A. BLEWETT
Business Education
Eighth Grade Reading



MISS HELEN NOLAN
Vocal Music
Eighth Grade English



RALPH MARTIN
Coach
American History



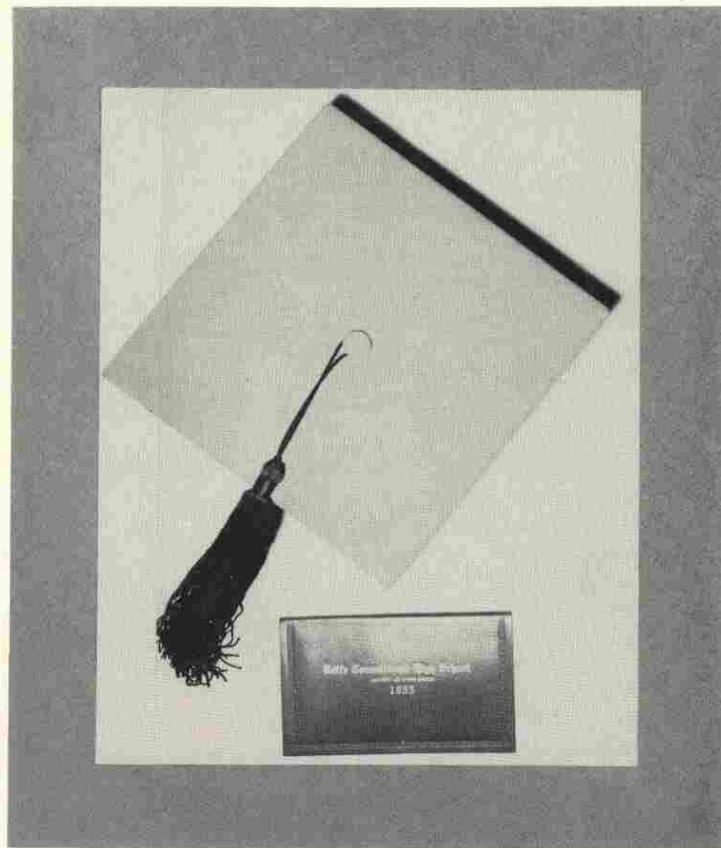
MRS. EDDIE KLEEN
English
Dramatics
Seventh Grade English

JOHN GRACE
Junior High Principal
Junior High Coach



This page sponsored by C. J. WHITE, OPTOMETRIST, Rolfe, Iowa

Seniors



Seniors

CLASS COLORS

American Beauty Rose and Gray

CLASS FLOWER

Carnation

SECRETARY AND TREASURER

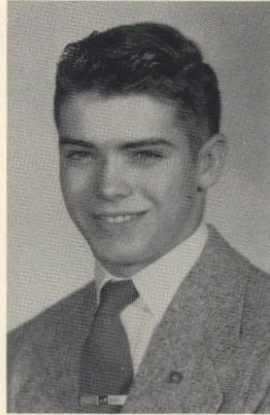


"Her heart is like a trolley:
Always room for one more."

CAROLYN SCHOON

Girls' Glee Club 1,2,3,4
Mixed Chorus 2,3,4
Class Play 3,4
Homecoming Queen 4
F. H. A. 1,2,3,4
F. H. A. Officer 4
Declam 4
Cheerleader 3,4
Class Officer 3,4
Annual Staff 4

VICE-PRESIDENT



"Give me time and I'll grow up."

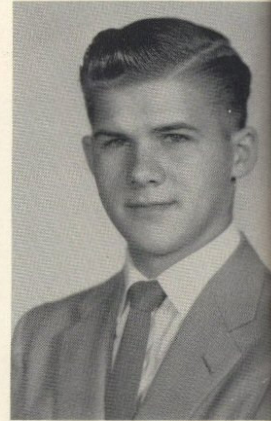
JERRY FARLOW

Football 3,4
Baseball 1,2,3,4
Track 1,2,3,4
Basketball 2,3
Band 1,2,3,4
Glee Club 1,2,3,4
Mixed Chorus 2,4
French Horn Quartet 2,3,4
Marching Band 1,2
Annual Staff 4
Class Officer 4
Pep Band 2
Woodwind Quintet 3
Basketball Student Manager
Class Play 3,4

CLASS MOTTO

Let a man then know his worth, and keep things
under his feet.---Emerson

PRESIDENT



"Now that Einstein is gone,
maybe I'll be recognized."

RONALD SHIMON

Concert Band 1,2,3,4
Marching Band 1,2,3,4
Boys' Glee Club 1,2,3,4
Mixed Chorus 2,3,4
Pep Band 1,2,3,4
Dance Band 2,3
Saxophone Quartet 1,2,3
Saxophone Solo 1,2,3,4
Annual Staff 4
Class Officer 1,2,4
Boys' Quartet 4
Madrigal 4
Woodwind Chamber Group 4

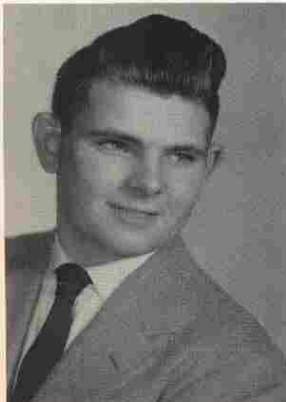
This page sponsored by RICKARD HARDWARE, Rolfe, Iowa



"Her mind is like a railroad timetable - subject to change without notice."

GLORIA NIELSEN

Declam 1,4
Concert Band 1,2,3,4
Marching Band 1,2,3,4
Pep Band 1,2,3,4
Triple Trio 2
Second Band 1
Girls' Glee Club 1,2,3,4
Mixed Chorus 1,2,3,4
Band Queen 4
Homecoming Attendant 4
Class Play 3,4
F. H. A. 1,2,3,4
F. H. A. Officer 3,4
F. H. A. State Convention 3
Woodwind Chamber Group 4



"He'd rather catch a ball than a girl."

This page sponsored by M. W. WEBB DRUG STORE, Rolfe, Iowa



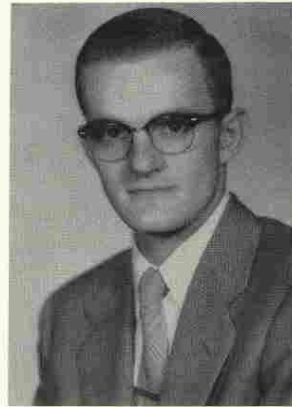
"There's never been such a good reporter of events."

BERYL WICKRE

Declam 1,2,3,4
Concert Band 1,2,3,4
Marching Band 1,2,3,4
Pep Band 1,2,3,4
Flute Trio 2,3,4
Flute Quartet 1
Girls' Glee Club 1,2,3,4
Mixed Chorus 2,3,4
Homecoming Attendant 4
Class Play 3,4
Flute Solo 2,4
F. H. A. 1,2,3,4
F. H. A. Officer 2
Band Librarian 1,2,3,4

ELWYN BURNS

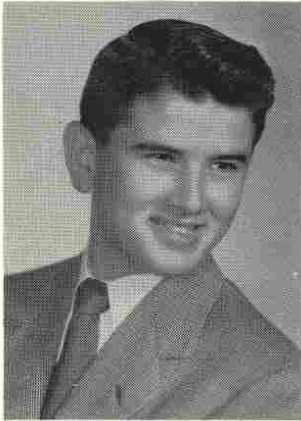
Football 1,2,3,4
F. F. A. 1,2,3,4
F. F. A. Officer 3,4
F. F. A. Judging Team 3,4



"They do say, many a faithful heart beats beneath a rough exterior."

JOHN W. POHN

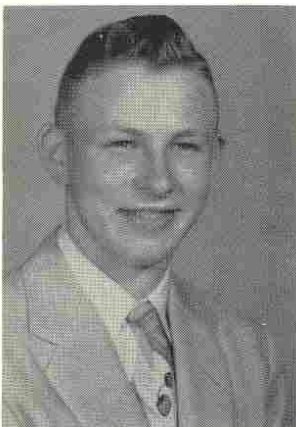
Mixed Chorus 1,2,3,4
Boys' Glee Club 1,2,3,4
Boys' Quartet 1,2,3,4
Mixed Octet 1
Double Boys' Quartet 1
Christmas Program Script 4
Vocal Solo 2,3,4
Cornet Solo 1,2,3
Concert Band 1,2,3,4
Marching Band 3,4
Pep Band 3,4
Swing Band 2,3
Brass Sextet 1,2,3,4
Brass Choir 4
Voice of Democracy Contest 4
Class Officer 2
Annual Staff 4
Madrigal 3,4
Baseball Manager 1
Track 1,2,3,4
Declam 2,3,4
One-Act Play 3
Class Play 3,4
Student Conductor 3,4
Drum Major 3
Football 1,2
Football Manager 3
Basketball 1,2



"Each mind has its own method."

PAT COX

Football 1,4
Brass Choir 4
F. F. A. Convention 1,4
Track 4
Band 1,2,3,4
Glee Club 2,3,4
Mixed Chorus 4
Pep Band 1,2,3,4
Dance Band 3
Marching Band 2,3
Basketball Manager 3
Class Play 3,4
F. F. A. 1,2,3,4
F. F. A. Contest 4



"He could be moved to smile at anything."



"Ever in motion, noisy and cheery, full of mischief, and never weary."

MARLENE STRUTHERS

Glass Play 3,4
Declam 1,2,3,4
Concert Band 4
Second Band 4
Girls' Glee Club 2,3,4
Vocal Solo 2,3,4
F. H. A. 1,2,3,4
Marching Band 3,4
Mixed Chorus 2,3,4
Madrigal 3,4
Trio 4
F. H. A. Officer 2
Triple Trio 2
Sextet 1,3,4

RONALD GARDEWINE

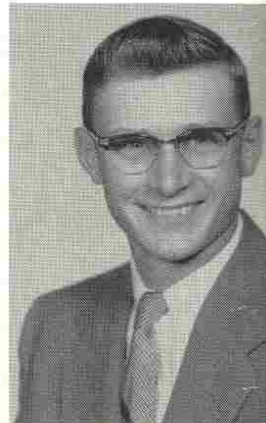
F. F. A. 2,3,4
Class Officer 2
Basketball 2



"I don't know anything about anything yet, but I'll soon find out."

MERLIN PATTERSON

Football 3,4
Boys' Glee Club 3,4
Mixed Chorus 3



"Why study, there are so many things in life."

GLENN MARKLEY

Football Manager 2
Track Manager 2
Baseball Manager 2
F. F. A. 1,2,3
Class Play 4
Basketball 2



"Except my sweetheart there is nothing better than a grand piano."

GARY CLARK

Concert Band 1,2,3,4
Marching Band 1,2,3,4
Pep Band 1,2,3,4
Drum Major 3,4
Mixed Chorus 1,2,3,4
Boys' Glee Club 1,2,3,4
Boys' Quartet 1,2,3,4
Brass Sextet 2,3,4
Mixed Quartet 2
Accompanist 1,2,3,4
Vocal Solo 1,2,3,4
Cornet Solo 1,3,4
Piano Solo 1,2,3,4
Declam 1,2,3,4
One Act Play 3
Class Play 3,4
County Chorus Accompanist 3,4
Brass Choir 4
Annual Staff 4
Madrigal 2,3,4
Voice of Democracy Contest 4
Double Boys' Quartet 1
Dance Band 3
Mixed Octet 3
Christmas Program 4
Student Conductor Vocal 4
Grade Operetta Accompanist 3,4
Assistant Student Cond. Pep Band 4



"I wonder why so many things are bigger than I."

LARRY KERNS

Football 1,2,3,4
Track 1,2,3,4
Basketball 1,2
Baseball Manager 1
Concert Band 1,2,3,4
Boys' Glee Club 1,2,3,4
Mixed Chorus 1,2,3,4
Pep Band 1,2,3,4
Saxophone Quartet 1,2,3
Dance Band 1,3
Class Officer 3
F. F. A. 1,2,3,4
F. F. A. Officer 2,4
Saxophone Solo 1,2
Annual Staff 4
F. F. A. Judging Team 4
F. F. A. Contest 2,4
Woodwind Chamber Group 4
Vocal Solo 4



"The reason ideas die quickly in some heads is that they can't stand solitary confinement."

WILLIAM KEMNA

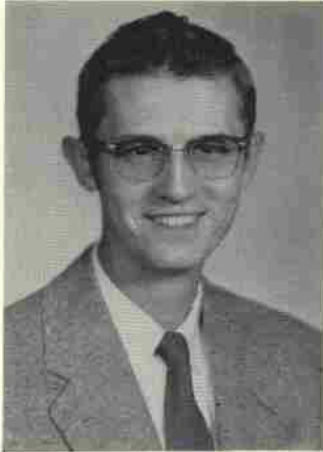
Class Play 3,4
Concert Band 1,2,3,4
Boys' Glee Club 4
Mixed Chorus 4
F. F. A. 1,2,3,4
F. F. A. Officer 4
F. F. A. Judging Team 3
Marching Band 1,2,3,4
Second Band 1,2



SHIRLEY PETERSON

F. H. A. 1,2,3,4
F. H. A. Officer 4
Girls' Glee Club 2
Class Play 3,4

"Like the wise old bird, often seen but never heard."



"When there is mischief brewing -
he might be doing the stirring."

HARVEY APPLGATE

Boys' Glee Club 1,2,3,4
Mixed Chorus 2
Class Play 3
F. F. A. 1,2,3
Track Manager 2
Baseball Manager 2



"She knows some from every town;
she's one senior who gets around."

JUANITA SNOOK

Class Play 3,4
Beginners' Band 1
Girls' Glee Club 2
F. H. A. 1,2,3,4
Class Officer 1



"No civilized person ever
goes to bed the same day
he gets up."

CARL DOUGHERTY

Football 1,3,4
Basketball 1,2,3,4
Baseball 3,4



"He's a poet and don't know
it, but his feet show it
'cause they're long fellows."

DONALD ONNEN

Boys' Glee Club 1,3
Mixed Chorus 1,3
Football 4
Class Officer 3



"I'm a smart guy, but I have
a hard time convincing anyone."

LARRY SNOOK

Declam 2,3,4
Boys' Glee Club 1,2
F. F. A. 1
Basketball 3

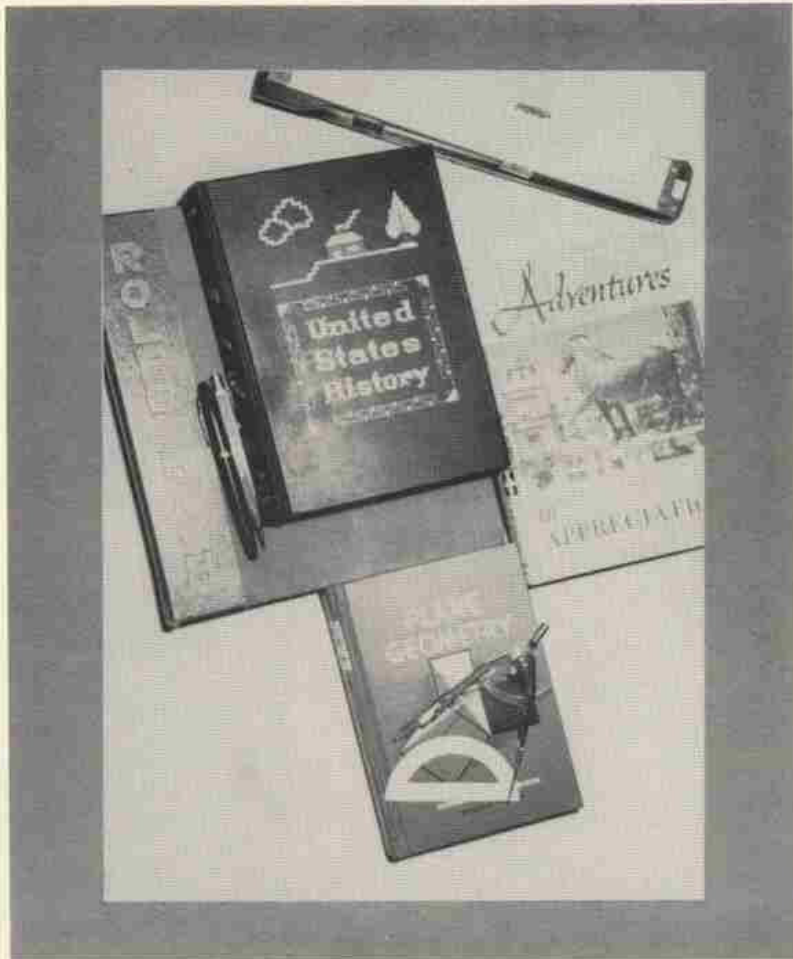


"He's more ambitious than
he appears."

GEORGE SWAN

Pep Band 1,2,3,4
Annual Staff 4
F. F. A. Convention 1
Class Play 3
Concert Band 1,2,3,4
Mixed Chorus 1,2,3,4
Vocal Solo 3
Football 1
F. F. A. 1,2,3,4
Marching Band 2,3,4

Underclassmen





Juniors

First Row: C. Simonson, J. DeWolf, J. Olerich, A. Murray, S. Bishop. Second Row: M. Dornath, V. Thorson, E. Fevold, M. Page, S. Hughes, M. Woods. Third Row: I. Markley, G. Ives, G. Hartmann, S. Wilcox, J. Grady. Fourth Row: Miss Marcum, C. Shimon, J. Shelgren, Mrs. Sutton. Fifth Row: J. Freeman, J. Robinson, C. Peters, J. Reckard, N. Heald. Sixth Row: G. Reese, K. Kerns, A. Hermanson, E. Shelgren.



CLASS OFFICERS

Eddie Shelgren-President
Kenton Kerns-Vice President
Joe Reckard-Treasurer-Secretary



This page sponsored by OLNEY FOOD MARKET, Rolfe, Iowa

Sophomores

First Row: D. Dailey, J. Mortensen, J. Young, D. Ranney, G. Schoon. Second Row: J. Pederson, S. Wax, Marlene Peterson, Marilyn Peterson, A. VanGorkom, D. Kemna. Third Row: S. Roberts, J. Shelgren, C. Murray, K. Seward, D. Lanus, J. Peterson. Fourth Row: M. Miller, J. Hopkins, M. Grady, S. Hughes, S. Nicoson, Mr. Martin. Fifth Row: Miss Slupe, K. Shaw, J. MacVey, R. Thomas. Sixth Row: L. Burns, L. Pullen, B. Prehn, G. Kaiser. Not in picture. Greg Kaiser, M. Luft.



CLASS OFFICERS
Jane Shelgren--President
Richard Ranney--Treasurer
Bruce Prehn--Secretary
Jerry MacVey--Vice President



This page sponsored by J. T. GRANT & SON, Rolfe, Iowa



Freshmen

First Row: E. Snook, P. Johnson, L. Mortensen, H. Bishop, D. Page, V. Shaw. Second Row: A. Johnson, J. Cuthbertson, J. Wilson, S. Ives, J. Nielsen, C. Applegate, M. Hopkins. Third Row: Miss Blewett, B. Krebsbach, Judy Shimon, J. Lennus, J. Rickard, J. Hughes. Fourth Row: D. Sandvig, Janet Shimon, S. Johnson, J. Robinson, M. Bruce, Mr. Morris. Fifth Row: L. Tiernan, H. Block, L. Dornath, P. Biedermann, L. Stacy. Sixth Row: J. Ranger, S. Beckord, D. Erickson, L. Trupe.



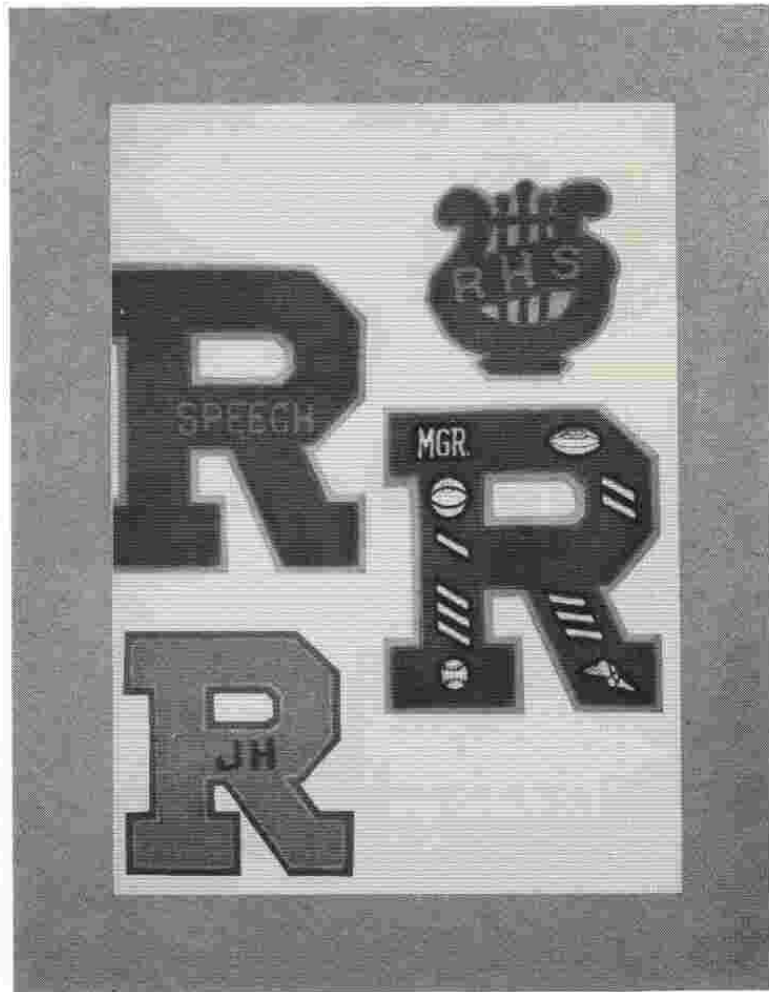
Class Officers

Paul Johnson-President
Janis Wilson-Vice President
Sally Ives-Secretary-Treasurer



This page sponsored by CLIMAX GRAIN & FEED CO.

Activities





Concert Band



First Row: J. Wilson, B. Wickre, J. Behrendsen, J. Bielefeldt, N. Heald, D. Ranney. Second Row: J. Shelgren, S. Ives, D. Erickson, S. Schmidt, M. Struthers, M. Shimon, M. Eikenberry, S. Wax. Third Row: R. Shimon, J. Peterson, D. Kemna, J. Nielsen, G. Nielsen, J. Robinson, L. Kerns, S. Bishop, C. Simonson, J. Farlow, C. Ives. Fourth Row: B. Kemna, P. Dailey, V. Thorson, M. Woods, J. Robinson, D. Thorson, B. Prehn, M. Dornath, J. Young, J. Mortensen, P. Cox, G. Hartmann, G. Clark, J. Prehn. Fifth Row, standing: Mr. Kloster, S. Nicoson, I. Mortensen, J. Reckard, G. Swan.



BRASS SEXTET

W. Kemna, V. Thorson, M. Dornath, C. Ives, G. Clark, J. Prehn



WOODWIND CHAMBER GROUP

J. Wilson, M. Eikenberry, S. Wax, N. Heald, R. Shimon, G. Nielsen, J. Nielsen, S. Ives, C. Ives.



B. Prehn



PIANO SOLOS
S. Nicoson



G. Clark

This page sponsored by G. FRED SMITH, INSURANCE, Rolfe, Iowa

Beginners



First Row: D. Davidson, F. Struthers, S. Graeber, J. Nelson, T. Kanna, J. Truelson. Second Row: K. Graff, S. Chadwick, L. Accurso, D. Seward, B. Ives, M. DeWolf. Back Row: Mr. Kloster, L. Kaiser.

and



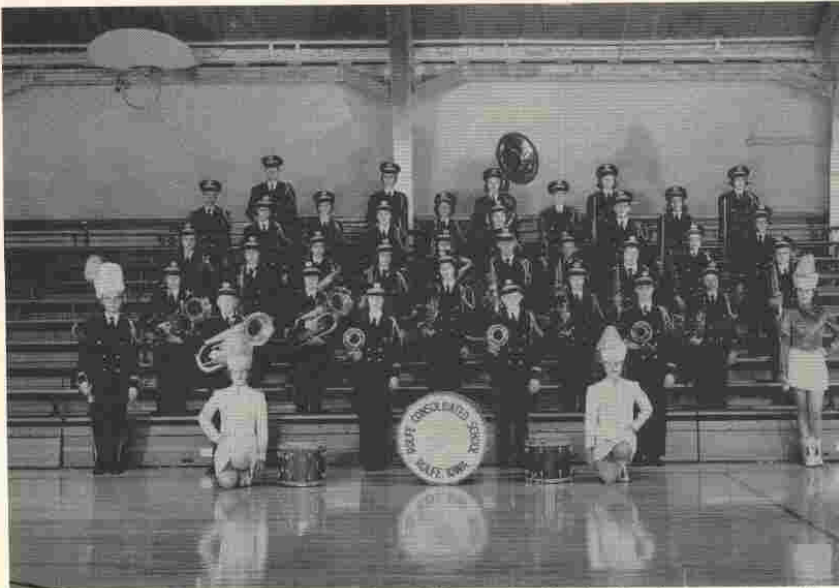
First Row: J. Bohrendsen, J. Bielefeldt, C. Gunderson, D. Erickson, S. Schmidt, M. Struthers, M. Shimon, M. Eikenberry. Second Row: J. Nielsen, L. MacVey, J. Burns, J. Simes, S. Ives, J. Robinson, C. Applegate, B. Ives, S. Wickre, S. Bishop, C. Simonson, M. Hodgell. Third Row: P. Dailey, R. Heald, S. Accurso, M. Woods, A. Johnson, D. Thorsen, D. Seward, M. Dornath, M. Hodgell, J. Ives, R. Heald, K. Fredericks, G. Hartmann. Fourth Row: Mr. Kloster, B. Reckord.

Second

Bands



This page sponsored by J. H. BRINKMAN, ATTORNEY AT LAW, Rolfe, Iowa



Marching Band



First Row: S. Wax, A. Johnson. Second Row: G. Clark, D. Thorson, P. Dailey, M. Dornath, B. Kemna, I. Markley. Third Row: V. Thorson, M. Woods, C. Ives, C. Simonson, S. Bishop. Fourth Row: J. Burns, D. Kemna, R. Shimon, J. Peterson, J. Nielsen. Fifth Row: G. Nielsen, J. Robinson, C. Applegate, L. MacVey, S. Smith. Sixth Row: S. Ives, J. Shelgren, M. Struthers, G. Swan, S. Nicoson. Seventh Row: D. Erickson, M. Eikenberry, M. Shimon, D. Ranney, B. Wickre. Eighth Row: J. Prehn, G. Hartmann, M. Dornath, J. Wilson, J. Behrendsen.



1954 BAND QUEEN
Gloria Nielsen



MARIMBA SOLOS
S. Nicoson, I. Mortensen



TYMPANI SOLO
I. Mortensen



FLUTE SOLOS
B. Wickre, J. Wilson

This page sponsored by IOWA ELECTRIC LIGHT AND POWER CO., Rolfe, Iowa



BARITONE SOLO
V. Thorson



ALTO SAXOPHONE SOLO
R. Shimon



FRENCH HORN SOLOS
C. Ives, J. Farlow



FRENCH HORN QUARTET
J. Farlow, C. Simonsen, S. Bishop, C. Ives



FLUTE TRIO
J. Behrendsen, B. Wickre, J. Wilson



CORNET SOLO
G. Clark



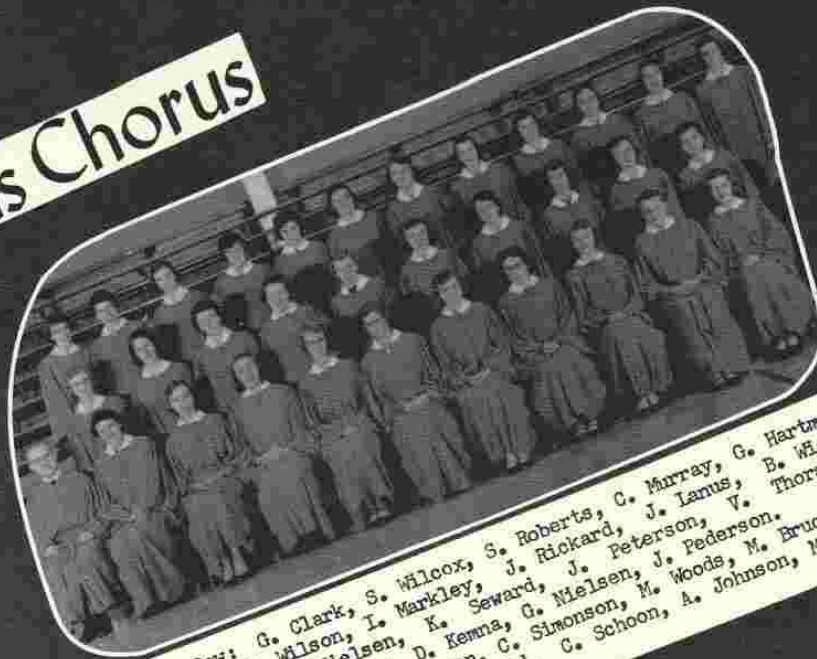
TUBA SOLOS
B. Prehn, M. Dornath



BASS CLARINET SOLO
S. Ives

This page sponsored by HUGHES STOCKYARDS, Rolfe, Iowa

Girls Chorus



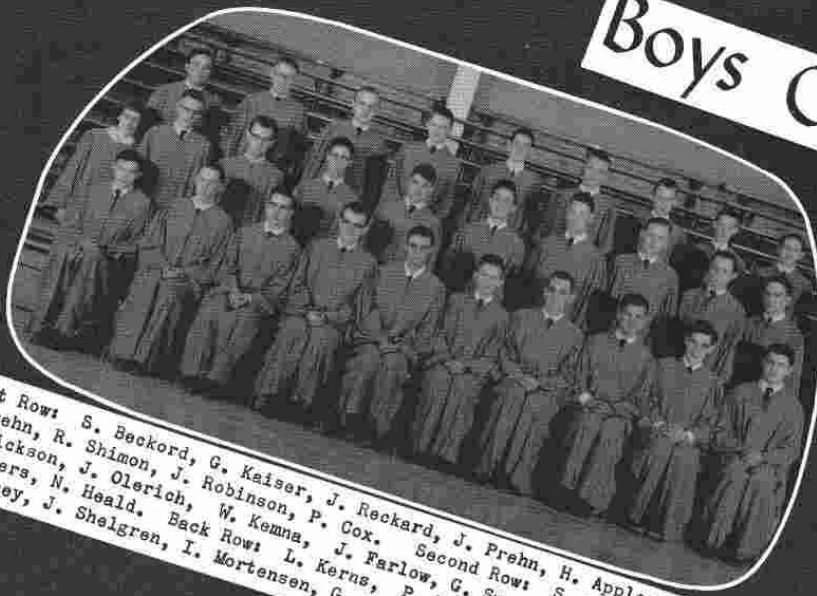
Front Row: G. Clark, S. Wilcox, S. Roberts, C. Murray, G. Hartmann,
S. Ives, J. Wilson, I. Markley, J. Rickard, J. Iamus, B. Wickre,
Second Row: J. Nielsen, K. Seward, J. Peterson, V. Thorsen,
M. Dornath, D. Sandvig, D. Kemna, G. Nielsen, J. Pederson. Third
Row: S. Nicoson, J. Robinson, C. Simonson, M. Woods, M. Bruce, M.
Struthers, J. Shelgren, E. Revold, C. Schoon, A. Johnson, M. Luft,
S. Wax.

Mixed Chorus



Front Row: G. Clark, B. Kemna, S. Wilcox, S. Roberts, S. Ives,
G. Hartmann, J. Wilson, D. Kemna, J. Rickard, G. Nielsen, J. Olerich,
J. Mortensen. Second Row: L. Kerns, J. Farlow, J. Nielsen, C. Ives,
K. Seward, V. Thorsen, M. Dornath, A. Johnson, C. Schoon, B. Wickre,
R. Shimon, J. Robinson, C. Simonson, P. Johnson, I. Mortensen, S.
Nicoson, S. Wax, N. Heald, P. Beiderman. Third Row: R. Ranney, J.
E. Revold, J. Reckard, G. Kaiser, J. MacVey, J. Prehn, B. Prehn, K.
Robinson, G. Swan, C. Peters, P. Cox.

Boys Chorus



Front Row: S. Beckord, G. Kaiser, J. Reckard, J. Prehn, H. Applegate, J. MacVey,
B. Prehn, R. Shimon, J. Robinson, P. Cox. Second Row: S. Nicoson, Accompanist,
D. Erickson, J. Olerich, W. Kemna, J. Farlow, G. Swan, K. Kerne, A. Hermensen,
C. Peters, N. Heald. Back Row: L. Kerns, P. Biederman, G. Clark, J. Mortensen,
R. Ranney, J. Shelgren, I. Mortensen, G. Schoon, P. Johnson.

Madrigal



Front Row: D. Kemna, C. Simonson, S. Nicoson, V. Thorson, M. Struthers, C. Ives,
Second Row: J. Prehn, R. Shimon, G. Clark, K. Kerns.



Miss Nolan



TREBLE VOICE, MEDIUM
V. Thorson, S. Roberts,
S. Nicoson



TREBLE VOICE, HIGH
D. Kemna, J. Wilson, C. Simonson



BOYS' QUARTET
K. Kerns, G. Clark, R. Shimon,
J. Prehn



BARITONE SOLOS
B. Prehn, G. Clark



GIRLS' TRIO
D. Kemna, S. Nicoson, M. Struthers



BASS SOLOS
J. Robinson, K. Kerns



TREBLE VOICE, LOW
M. Struthers, M. Miller



GIRLS' SEXTET
D. Kemna, C. Simonson, S. Nicoson, V. Thorson,
M. Struthers, C. Ives



TENOR SOLOS
L. Kerns, J. Prehn

This page sponsored by FAY WAX, DEKALB DEALER, Rolfe, Iowa

Rolfe Grade School Operetta

"The Early Bird Catches the Worm"

Libretto by Theodosia Paynter

Music by Grant-Schaefer

SYNOPSIS

Act I—A Poultry Yard. Sunrise

Act II—Same as Act I. Next Morning Before Dawn

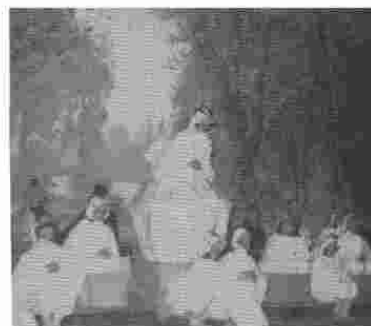
CAST OF CHARACTERS

Goosie Waddles—Clown goose who talks in riddles and jinglesGarry MacVey
 Dr. Quack—Whose patients quake when he quacksSteven Graeber
 First Lady of Poultryland—Cluck! Cluck! She's a wonderJudith Jordan
 President Rooster—Rules the roosts of PoultrylandJames Wilson
 Egg-Plant—Claims to be a fowl as she "lays" in gardensJudy Sime
 Farmer and Farmer's Wife—Fatten their fowls with fine feedMike Behrendsen, Janet Behrendsen
 City Boy and Girl—On a farm for the first timeKenneth Patterson, Julie Bielefeldt
 Kite—Great people, like Presidents, take the wind out of his sailsMichael Calligan
 Farmer Boy and Girl—Have never been off the farmSam Chadwick, Linda Hughes
 Chakie } Quintuplets hatched from one egg { Ann DeWolf
 Chekie } { Phyllis Pederson
 Chykie } { Barbara Wagner
 Chokie } { Rita Wax
 Chukie } { Patricia Mortensen
 Pirate Hawk—Swoops upon innocent chicks, with terrible talonsDale Wagner
 FoxDennis Hansen
 Fond of fat fowls, drumsticks, and wings
 2 Little FoxesGeorge Luft, Joan Kirby
 1st, 2nd, 3rd, 4th, 5th, and 6th Hens—Laying for a livingSandra Ives, Vianne Christensen, Jeannie Nelson, Karen Collins, Sally Culbertson, Joan Cleal
 1st, 2nd, and 3rd Bantam Roosters—Feel that they "are boys only once"Robert Dixon, Henry Olerich, Tommy Behrendsen
 Dawn MotherNancy DeWolf

CHORUSES

HENS	BANTAM ROOSTERS	ROOSTERS
DAWN ELVES		CITY BOYS AND GIRLS
	FISHERMEN	
HUNTERS		WORMS

Helen Nolan—Director
 Dorothy Nelson—Dialogue
 Dale Shires and John Grace—Stage Managers
 Gary Clark—Accompanist



This page sponsored by ROLFE CLEANERS, Rolfe, Iowa

F.H.A.



First Row: Janet Shimon, E. Snook, J. Robinson, C. Applegate, J. Pederson, M. Miller, J. Rickard, A. Van Gorkom, S. Peterson, J. Snook.
 Second Row: Judy Shimon, D. Lanus, K. Seward, J. Cuthbertson, C. Murray, D. Sandvig, S. Johnson, S. Wax, C. Schoon, Miss Marcum.
 Third Row: V. Shaw, J. Nielsen, D. Kemna, A. Johnson, S. Roberts, B. Krebsbach, S. Ives, J. Wilson, J. Lanus, J. Shelgren.
 Fourth Row: E. Fevold, G. Nielsen, M. Wood, C. Shimon, I. Markley, C. Ives, S. Wilcox, G. Hartmann, S. Hughes, M. Dornath, M. Page, V. Thorson, B. Wickre, C. Simonson, S. Bishop.



First Row: C. Simonson, Secretary; S. Nicoson, Parliamentarian; C. Schoon, Recreation; G. Nielsen, Historian;
 Second Row: Mrs. Sutton, Advisor; V. Thorson, President; C. Ives, Vice-President; G. Hartmann, Treasurer; J. Shelgren, Projects; Mrs. Thorson, Chapter Mother.



The Rolfe Chapter of the F. H. A. has been quite active this year. Some of their activities include freshman initiation, a formal installation of officers, a pancake supper for fathers of the members, Christmas caroling followed by a chili supper and gift exchange, secret pal birthday and valentine exchanges, and a picnic for the eighth girls.

One highlight for the year was the service in which Miss Marcum was made an honorary member and presented with the F. H. A. pin.

F.F.A.



First Row: D. Page, L. Troupe, H. Bishop, L. Dornath, G. Treahary, D. Lund, L. Kerns.
 Second Row: J. Hanson, D. Daily, D. Cruickshank, J. Hughes, J. Olerich, N. Heald, J. Schonberger, J. Shelgren, H. Block.
 Third Row: L. Triplet, B. Kemna, E. Hoopingartner, E. Burns, R. Ives, G. Swan, P. Cox, J. DeWolf, A. Johnson.
 Fourth Row: R. Lehnus, L. Diggs, A. Hermensen, K. Kerns, L. Burns, L. Pullen, R. Gardewine, T. Triplet, Mr. Shires.

Officers



First Row: N. Heald, Vice-president; L. Kerns, Secretary; J. DeWolf, Sentinel; J. Olerich, Reporter.
 Second Row: B. Kemna, Treasurer; E. Burns, President; Mr. Shires, Advisor.

This page sponsored by SAM NICOSON, GENERAL INSURANCE, Rolfe, Iowa

Annual Staff



First Row: L. Kerns, Miss Elewett, C. Schoon, G. Clark,
Second Row: G. Swan, J. Prehn, R. Shimon, J. Farlow.



This page sponsored by L. W. FELDMAN, D. V. M., Rolfe, Iowa

R.
H.
S.

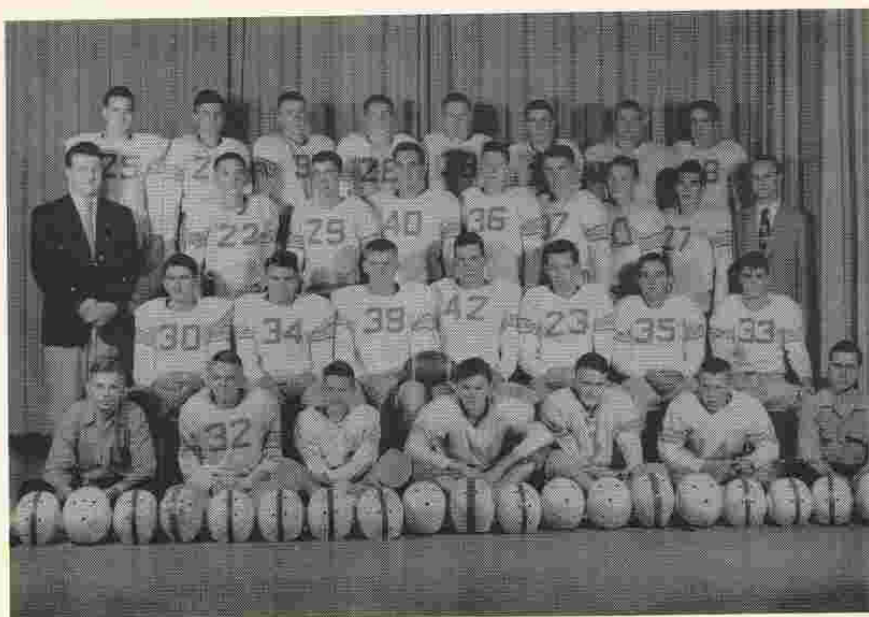


C. Schoon, E. Fevold, S. Wax, J. Shelgren

Cheerleaders



This page sponsored by FREEMAN'S CLOVER FARM STORE, Rolfe, Iowa



Football

Front Row: Mgr. J. MacVey, J. Mortensen, G. Schoon, S. Beckord, H. Bishop, I. Mortensen, Mgr. R. Thomas. Second Row: P. Cox, E. Burns, D. Onnen, C. Dougherty, B. Patterson, L. Kerns, J. Farlow. Third Row: Coach Martin, J. Young, L. Pullen, B. Prehn, K. Kerns, L. Burns, E. Shelgren, J. Robinson, Asst. Coach Sutton. Back Row: J. Reckard, J. DeWolf, K. Shaw, G. Kaiser, Gary Kaiser, J. Freeman, J. Shelgren, N. Heald.

FOOTBALL LETTER WINNERS

SENIORS

Bud Patterson

Jerry Farlow

Elwyn Burns

Larry Kerns

Carl Dougherty

SOPHOMORES

Jim Young

Gary Kaiser

Greg Kaiser

Kenneth Shaw

Bruce Prehn

JUNIORS

Edward Shelgren

Joel Freeman

Joe Reckard

Jerry Robinson

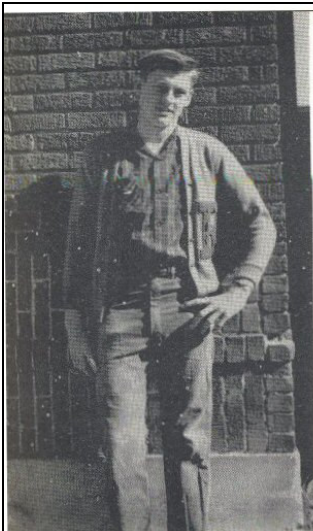
Norman Heald

Kenton Kerns

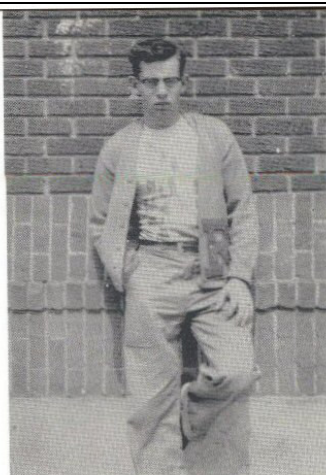
James Shelgren



This page sponsored by RICKARD HOME SERVICE, Rolfe, Iowa



Don Onnen



Bud Patterson



Jerry Farlow

Squad



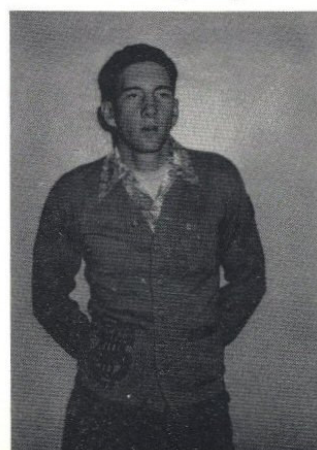
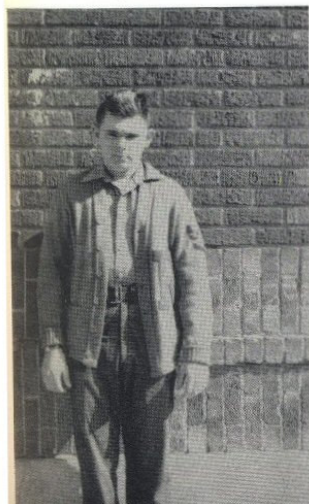
Elwyn Burns



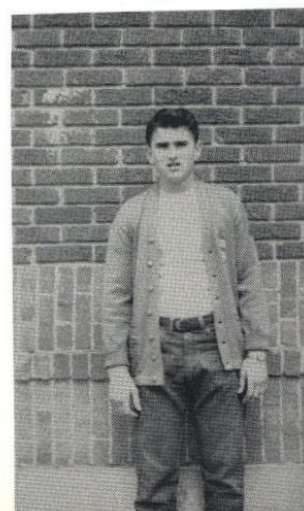
Larry Kerns



Seniors



Carl Dougherty



Pat Cox



HOMEcoming PROGRAM

New Auditorium

October 15, 1954

Fanfare Queen's Trumpeters
Geraldine Hartmann, Pat Cox
Ivan Mortensen, John Prehn

Football Tribute Larry Ke
Elywnn Bu

Proclamation Gary Schoon

Greetings The Que

Processional Gary Clark

Music Queen's 1
John Prehn, Gary Clark
Ronald Shimon, Kenton Kerns

Entrance of Queen and Court Attendants

Crown Bearer Kay Lynn Taylor

Address Rev. Christens
Minister of State

Football Squad

Musical Tribute Ivan Mortens

Beryl Wickre

Gloria Nielsen

Carolyn Schoon

Order of the Day Mr. Mortens

The Coronation Miss Marcum

Recessional Gary Cla



This page sponsored by GASKILL TRUCKING, Rolfe, Iowa



First Prize - Seniors
"Round We Go To Victory"

Second Prize - F. F. A.
"Whoeee Says We Can't Win?"



Third Prize - F. H. A.
"Rams Breeze Through"

Queen
Carolyn Schoon
Attendants
Gloria Nielsen Beryl Wickre
Crown Bearer
Kay Lynn Taylor



This page sponsored by DOROTHY'S BEAUTY SHOP, Rolfe, Iowa



Freshman Float
"Key To Success"



Junior Float
"Rams' Trojan Horse"



Rams In Action



Sophomore Float
"We'll Break Their Rock
And Drain Their Well"

This page sponsored by ROBINSON FARM EQUIPMENT, Rolfe, Iowa



HE'S THE DREAMIEST



SOMETHING BROKE



ONCE UPON A TIME--



DON'T DROP IT!



HUNGRY BOYS



WHAT IS IT?



CHIP ON HIS SHOULDER



CHIVALRY IS DEAD



A ONE, A TWO--



PLOTTING



THREE BALLS FOR
A QUARTER



THAT WAS A JOKE?

Basketball



Front Row: D. Ranney, L. Burns, J. Young, G. Kaiser, C. Dougherty, E. Shelgren, A. Murray, J. Reckard, C. Peters. Second Row: J. Farlow, P. Biederman, L. Tiernan, J. McVey, J. Mortensen, K. Shaw, G. Kaiser, S. Beckord, J. Ranger, G. Schoon. Third Row: Mr. Martin, P. Johnson, H. Bishop, I. Mortensen, L. Pullen, D. Erickson, R. Thomas, L. Stacey, and Mr. Sutton.

* Basketball Results--1954-55

Rolfe 50	West Bend	35
Rolfe 57	Pocahontas	
	Sacred Heart	51
Rolfe 49	Laurens	44
Rolfe 46	Manson	57
Rolfe 46	Pocahontas	69
Rolfe 37	Rockwell City	43
Rolfe 34	Rodman	45
Rolfe 53	Havelock	57
Rolfe 54	Albert City	36
Rolfe 70	Plover	44
Rolfe 41	Lake City	48
Rolfe 46	Rockwell City	45
Rolfe 35	Laurens	46
Rolfe 65	Manson	71
Rolfe 44	Pocahontas	66

BOYS' COUNTY

Rolfe 55	Havelock	48
Rolfe 69	Fonda	30
Rolfe 59	Palmer	49
Rolfe 45	Pocahontas	62 (Final)

BOYS' SECTIONAL

Rolfe 56	Gilmore City	51
Rolfe 56	Bradgate	72 (Final)

Won 11 Lost 12

All-Conferences:
Carl Dougherty

LETTERMEN

Carl Dougherty	Gary Kaiser
Eddie Shelgren	Jim Young
Carroll Peters	Dick Ranney
Andy Murray	

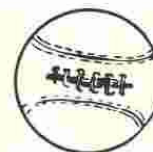
This page sponsored by HUNTER'S PRODUCE, Rolfe, Iowa



"Went wrong way"



"Jump, Carl"



This page sponsored by MILLER'S CAFE, Rolfe, Iowa

Baseball



First Row: J. Ranger, P. Biederman, L. Stacey, I. Mortensen, L. Tiernan, P. Johnson, G. Schoon, J. Hughes, Mgr. Back Row: J. MacVey, Mgr., J. Farlow, J. Freeman, E. Shelgren, G. Reese, C. Dougherty, Gary Kaiser, Greg Kaiser, R. Ranney, Mr. Sutton

BASEBALL RECORD

Rolfe	13	Palmer	7
Rolfe	2	Pocahontas	3
Rolfe	11	Laurens	10
Rolfe	8	Gilmore City	3 (Sec. Tourn.)
Rolfe	19	Ottosen	9 (Sec. Tourn.)
Rolfe	3	Bradgate	5 (Sec. Tourn.)

LETTERMEN

Carl Dougherty
 Jerry Farlow
 Joel Freeman
 Eddie Shelgren
 Gerald Reese
 Richard Ranney
 Greg Kaiser
 Gary Kaiser
 Paul Biederman
 Larry Stacey
 Jerry MacVey, Mgr.



This page sponsored by TAYLOR'S ROYAL "400", Rolfe, Iowa

Track



First Row: G. Schoon, Greg Kaiser, L. Kerns, J. Mortensen, J. Robinson, J. Reckard, H. Bishop, J. Farlow, K. Shaw, R. Thomas, J. Hughes, Mgr.
Back Row: Mr. Martin, Gary Kaiser, P. Cox, S. Beckord, J. Prehn, L. Pullen, L. Burns, K. Kerns, J. Young, E. Shelgren, B. Prehn, Mgr.

Pocahontas Relays -- 6 points 8th Place in Relay
3d in 2-mile Relay
4th in 100-yd. Dash

Alta Relays -- 6 points
1st in 880-yd. Run

Sac Relays -- 6 points
5th in Medley Relay
3d in High Jump
5th in High Jump

Conference Meet -- 38 1/3 points 3d in Conference
2d in High Hurdles 4th in 440-yd. Relay
3d in 2-mile Relay 3d in Mile Relay
5th in 880-yd. Relay 5th in High Jump
1st in 440-yd. Dash 4th in Broad Jump
3d in Low Hurdles 5th (Tie) in Pole Vault
2d in 880-yd. Run 3d in Football Throw

District Meet -- 83 5/6 points DISTRICT CHAMPIONS
1st in 100-yd. Dash 3d in 440-yd. Relay
1st in 2-mile Relay 2d in Mile Relay
4th in Mile Run 2d in Shot Put
1st in High Hurdles 5th in Shot Put
4th in High Hurdles 4th in Discus
4th in 880-yd. Relay 2d in Broad Jump
2d in 440-yd. Dash 1st in High Jump
1st in Low Hurdles 2d in Pole Vault
3d in Medley Relay 4th in Pole Vault
1st in 880-yd. Run 2d in Football Throw

LETTERMEN

Jerry Farlow
Pat Cox
Larry Kerns
John Prehn
Kenton Kerns
Joe Reckard
Jerry Robinson
Jim Shelgren
Eddie Shelgren
Kenny Shaw
Jim Young
John Mortensen
Gary Kaiser
Greg Kaiser
Russell Thomas
Larry Burns
Larry Pullen
Herbert Bishop
Sydney Beckort
Bruce Prehn, Mgr.
Jackie Hughes, Mgr.



This page sponsored by ALLREE REPAIR SHOP, Rolfe, Iowa

Speech



First Row: B. Wickre, G. Nielsen, J. Nielsen, M. Struthers, J. Wilson, S. Nicoson, S. Bishop. Second Row: G. Clark, J. Olerich, J. Prehn, Mrs. Kleen, B. Prehn, L. Snook, H. Bishop. Third Row: C. Applegate, S. Wax, C. Schoon, J. Shelgren, D. Sandvig, J. Robinson.



Gary Clark
Received I rating at
State Contest

RADIO SPEAKING

Jon Olerich*
Herbert Bishop
John Prehn**

"Farm Situation"
"Summary of News"
"Failure"

ORATORICAL DECLAMATION

Gary Clark**
Bruce Prehn
Jon Olerich*

"But I Am One"
"Communism and Religion"
"An American Tragedy"

INTERPRETIVE READING

Gloria Nielsen
Marlene Struthers
Gary Clark***

DRAMATIC DECLAMATION

Jane Grady
Shirley Bishop*
Jane Shelgren

"Afraid of the Dark"
"Honey"
"Blessed Damsel"

HUMOROUS DECLAMATION

Marlene Struthers
Sue Nicoson**
Larry Snook**

"Four O'Clock at the Sip and Bite"
"Home Talent Show"
"Brothers Take A Bow"

* Qualified for Pre-District
** Qualified for District
*** Qualified for State

Senior Class Play



Front Row: Beryl Wickre, Gloria Nielsen, Carolyn Schoon, Marlene Struthers, Shirley Peterson, Juanita Snook, Back Row: Gary Clark, Bill Kemna, Glenn Markley, Mrs. Kleen, John Prehn, Pat Cox, Jerry Farlow.

"HOBGOBLIN HOUSE" (A Mystery Comedy)

TIME: Evening of a stormy night

PLACE: Living room of the Hobgood mansion

C A S T

Darius Krupp, the caretaker
Henry Goober, a frightened Negro
Delilah Worts, another frightened Negro
Susan Parkins, a "hystericky" housekeeper
Aunt Priscilla, a sane, scientific-minded human being
Jill, her nervous niece
Marian, another niece
Frank Harlow, Marian's boyfriend
Jack Loring, Jill's boyfriend
Bluebeard Bronson, an escaped maniac
Bill Wilkins, guard at the insane asylum
Patricia Arnold, the mysterious girl

John Prehn
Gary Clark
Juanita Snook
Carolyn Schoon
Marlene Struthers
Beryl Wickre
Gloria Nielsen
Jerry Farlow
Pat Cox
Glenn Markley
Bill Kemna
Shirley Peterson





Junior Class Play

Front Row: J. Grady, I. Markley, C. Ives, S. Wilcox, G. Hartmann, V. Thorson, C. Simonson. Second Row: E. Fevold, J. Robinson, E. Shelgren, A. Hermansen, K. Kerns, J. Reckord, Miss Slupe.



NEARLY BELOVED

By
Donald Payton

Janet Maxwell, an authority on.....Virgene Thorson
effervescent adolescents
John Maxwell, a very worried father.....Arlen Hermansen
Connie, about to elope.....Carol Simonson
Betty Lou, a dreamer.....Carolyn Ives
Wilbur, "Mauler Maxwell".....Eddie Shelgren
Hercules, Wilbur's bosom pal.....Kenton Kerns
Bernadine, another dreamer.....Esther Fevold
Marvin, Connie's bashful boyfriend.....Joseph Reckard
Aunt Mary, to her Betty Lou is beloved.....Jane Grady
J. C. Mallory, Mr. Maxwell's boss.....Jerry Robinson
Molly, Conrad's messenger.....Sharon Wilcox
Miss Lewis, Mr. Mallory's secretary.....Geraldine Hartmann
Miss Murray.....Inez Markley





OH, OH, OOOOOHHHH!!!



DON'T GET TOUGH WITH ME!!



STRETCH



WELL, WE TRIED



HI, KIDS!



SIGH--



CAUGHT IN THE ACT



JUST LIKE A WOMAN



THIS IS A DANCE?



COX THE INDUSTRIALIST



HOW'S THIS?

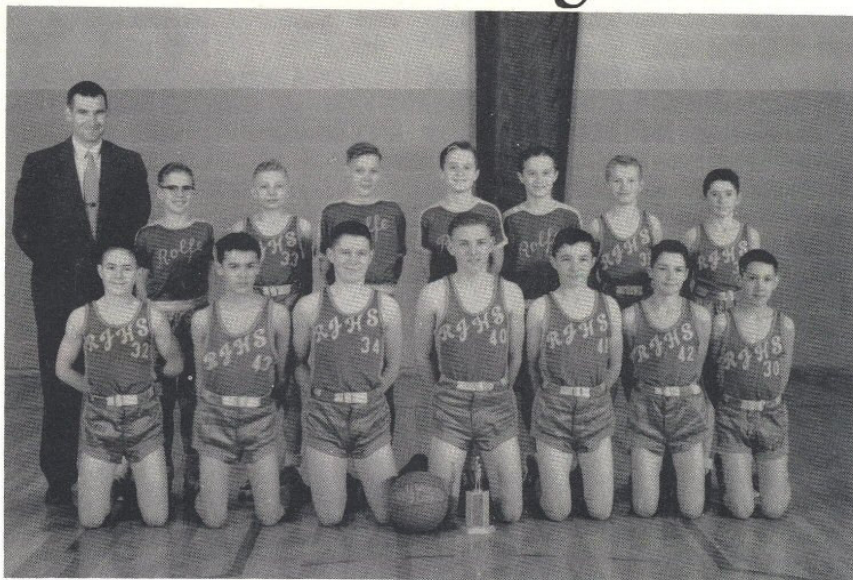


OFF WITH HIS HEAD

Camera

This page sponsored by LONG BROTHERS' CONST. CO., Rolfe, Iowa

Junior High



Front Row: D. Leadley, P. Calligan, G. Streit, G. Wolfe, T. Ranger, J. Hughes. Back Row: Mr. Grace, R. Heald, L. Macvey, G. Snook, B. Ives, J. Ives, D. Lowe, L. Mehaffey.

ROCKET BASKETBALL RECORD

Rolfe 42	Emmetsburg	31	Rolfe 32	D. M. T.	26
Rolfe 37	Plover	25	Rolfe 12	Pocahontas Catholic	38
Rolfe 18	Pocahontas Catholic	22	Rolfe 51	Ware	29
Rolfe 31	Gilmore City	29	Rolfe 33	Emmetsburg	27
Rolfe 29	Gilmore City	18	Rolfe 37	D. M. T.	15
Rolfe 43	Laurens	24	Rolfe 36	Pocahontas	25
Rolfe 26	Pocahontas	23	Rolfe 30	Laurens	38

With a small squad, the Rockets climaxed a successful season by taking runner-up honors in the Pocahontas County Tournament. Lacking size, the Rockets showed great hustle and a will to win.



Jeniece Burns, Ila Jean Gutz, Mary Jean Collins, Mary Cox.

This page sponsored by ROLFE AUTO COMPANY, Rolfe, Iowa

J
u
n
i
o
r
H
iT
r
a
c
k

Front Row: D. Seward, D. Leadley, T. Ranger, D. Lowe, R. Heald, J. Ives, A. Mehaffey, B. Ives. Back Row: M. Nelson, L. Stegge, F. Taylor, J. Schurr, G. Wolfe, G. Streit, S. Lowe, Mr. Grace.

Track Record

Dual with Laurens--Won 59-19
 Alta-440 Yd. Relay-second in heat
 Rolfe Relays-Second with 42½ points
 Lake City-Third in 880 Yd. Relay
 Fourth in 440 Yd. Relay
 Fourth in 100 Yd. Dash
 Humboldt-Fourth in meet with 34 points
 Carroll-Sixth in High-Hurdles
 Sixth in Low-Hurdles
 Triangular with Laurens and Emmetsburg

Junior High Football Record

Won 4---Tie 1

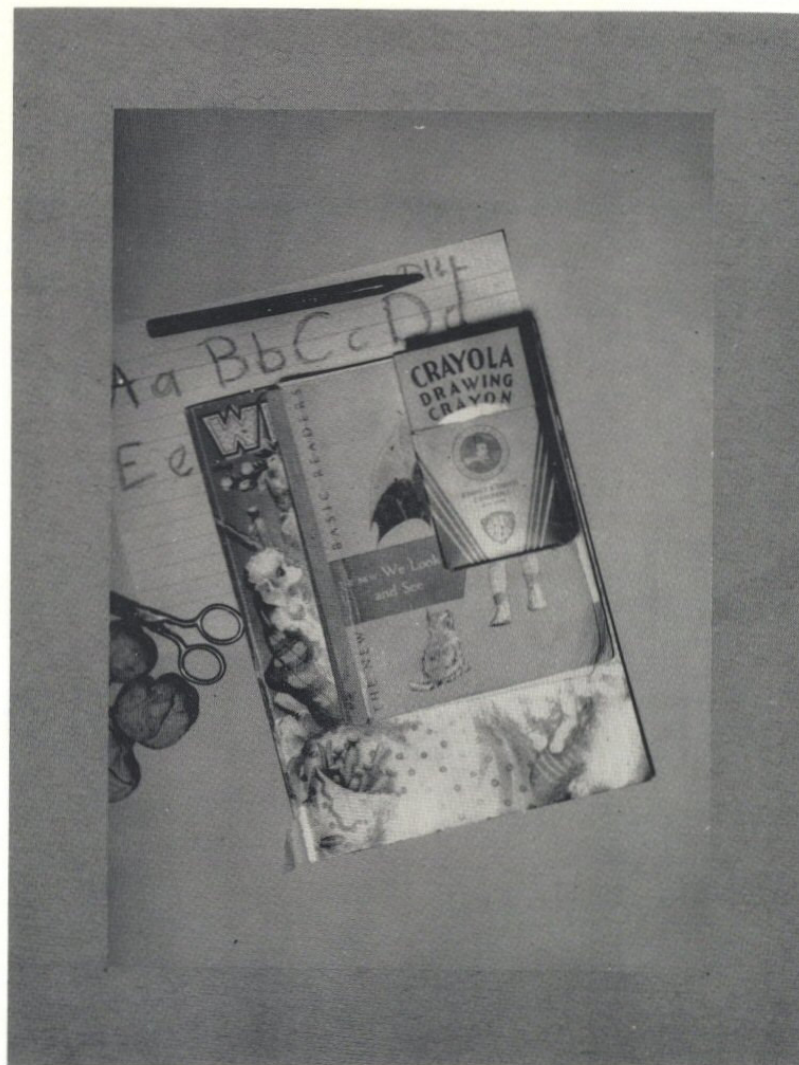
Rolfe	35	Laurens	0
Rolfe	26	Emmetsburg	13
Rolfe	21		
Rolfe	21	Pocahontas	21
Rolfe	41	Pocahontas	6
Rolfe	39	Laurens	6

J
u
n
i
o
r
H
iF
o
o
t
b
a
l
l

Front Row: D. Leadley, A. Johnson, Jr. Murray, J. Hughes, D. Lowe, P. Calligan. Second Row: A. Mehaffey, D. Thorson, B. Johnson, J. Schott, J. Keeble, E. Onnen, T. Ranger. Back Row: S. Lowe, K. Onnen, J. Schurr, G. Wolfe, M. Nelson, G. Streit, J. Miller, Mr. Grace. R. Boeckholt absent when picture taken.

This page sponsored by H. G. FRIGAARD, D. C., Rolfe, Iowa

Grades



Eighth



Front Row: A. Mehaffey, L. MacVey, E. Ives, A. Johnson, D. Leadley, J. Ives, J. Hughes. Second Row: M. Shimon, J. Peterson, G. Block, B. Struthers, J. Behrendsen, J. Burns, P. Dailey, I. Gutz, V. Dornath, Mr. Grace. Third Row: M. Eikenberry, S. Lowe, M. Nelson, K. Onnen, J. Schurr, G. Smith, G. Streit, D. Seward, M. Collins. R. Boeckholt absent.



Seventh

Back Row: T. Ranger, G. Snook, C. Mason, D. Thorson, J. Keeble, G. Wolfe, E. Applegate, M. Dornath, E. Onnen, J. Miller, R. Jones, Mr. Grace. Third Row: S. Wickre, P. Spiker, B. Wood, P. Jordan, W. Tiernan, C. Gunderson, K. Peters, M. Bartosh, J. Wagner, E. Kirby, S. Schmidt, S. Montieth. Second Row: M. Cox, L. Hopkins, T. Ranger, J. Johnson, J. Pederson, S. Page, B. Haynes, J. Ranger, J. Flaherty, J. Stacey, A. Wood, R. Heald. Front Row: K. Graaf, R. VanGorkom, J. Schott, B. Johnson, P. Calligan, G. Larson, Jr. Murray, R. Heald, R. Shimon. Not in picture when taken: L. Simonson, M. Hodgell.

This page sponsored by LLOYD L. COX, INSURANCE & FEEDS, Rolfe, Iowa



Sixth

Back Row: R. McIntire, G. Hopkins, J. Sime, R. Krebsbach, J. Bielefeldt, J. Jordan, J. Keeble. Second Row: K. Patterson, S. Accurso, B. Beckord, J. Wilson, C. Block, D. Mahaffey, Mrs. Spurrier. First Row: B. Ranney, M. Stacy, M. Behrendsen, P. Sandvig, G. Lanus, L. Hughes, J. Rickard.

Fifth



Back Row: K. Schoon, G. Smith, T. Kemna, G. MacVey, D. Beckord, J. Tiernan, L. Kaiser. Second Row: K. Collins, J. Nelson, J. Behrendsen, J. Truelson, L. Sandvig, S. Cuthbertson, K. Dailey, Mrs. Twigg. First Row: L. White, B. Johnson, E. Hopkins, A. Carlton, J. Kirby S. Wood, D. Snook

This page sponsored by FULLERTON LUMBER CO., Rolfe, Iowa

Fifth



Back Row: Miss Nelson, S. Ives, J. Frigaard, S. Hodoway, S. Otto, J. Rickard,
Third Row: D. Wagner, D. Wagner, D. Davidson, F. Struthers, C. Gunderson,
S. Chadwick, Second Row: M. Kuhn, V. Christensen, N. DeWolf, J. Cleal,
C. Krebsbach, C. Pullen, S. Wolfe. First Row: M. Calligan, L. Accurso,
S. Graeber, D. Hansen.



Fourth

Back Row: S. Page, S. Pedersen, L. Hansen, L. Dornath, D. Miller, J. Porter,
L. Bartosh. Third Row: D. Larson, K. Stacy, J. Rickard, M. Lehman, J. Hoefing,
S. Schott, Mrs. Mortensen. Second Row: E. Bishop, D. McBurney, L. Robinson,
G. Gustafson, B. Snook, P. Snook, B. Schultz. First Row: E. Schmitt, T.
Hicklefs, J. Peters, J. Boeckholt, Jr. Montieth.



Third and Fourth

Back Row: H. Olerich, D. Ives, D. Pedersen, M. McQuary, M. Page, R. Dixon, D. Behrendsen, D. Struthers, T. Behrendsen, D. Davidson, Miss Stoullil, Second Row: J. Horeman, B. Wagner, P. Pedersen, J. Otto, K. Gundersen, L. Rickard, J. Cornwell, R. Wax, First Row: J. Kirby, L. Leadley, J. Peterson, A. DeWolf, K. Smith, P. Mortensen, K. Rude.

Third



Back Row: Mrs. Spencer, G. Gustafson, R. Patterson, R. Martin, J. Klaha, D. Schott, B. Niceswanger, W. Erickson, Second Row: M. Lowe, J. Loss, J. Boeckholt, K. Truelson, E. Schurr, C. Nielsen, P. Tutt, S. Otto, C. Sandvig, T. Davis, First Row: G. Luft, D. Yabsley, R. Schoon, W. Hopkins, D. Rich, R. Montieth, D. Schultz.

This page sponsored by BRADBURN IMPLEMENT & TRUCK LINE, Rolfe, Iowa

Second



Back Row: Miss Huston, R. Stacy, K. Kaiser, G. Post, R. Miller, L. Zeman, N. Beuchle, Second Row: M. Vainreb, J. Spurrier, D. Spiker, A. Rickard, J. Reese, C. Martin, J. Guthbertson, D. Hosfing, First Row: N. Beuchle, P. Erickson, J. Gaskill, S. Lawton, C. Biederman, B. Page, H. McBurney, E. Peterson, K. Taylor, Not in picture J. Lowe.



First and Second

Back Row: D. Behrendsen, D. Patterson, F. Hudgell, R. Lanning, D. Graef, D. VanGorkom, C. Hodoway, B. Ricklefs, W. Hageman, Second Row: Mrs. Nicolson, K. Beade, K. Ives, B. Christensen, T. Dixon, M. Graeber, J. Jordan, J. Thoma, First Row: K. Struthers, M. DeWolf, M. Brinkman, C. Lehman, S. Olerich, E. Veinreb, A. DeWolf, J. Loss.

This page is sponsored by BECKORD'S HATCHERY, Rolfe, Iowa



First

Back Row: Mrs. Graeber, D. Hansen, C. Niceswanger, E. Weishaar, D. Martin, C. Schott, M. Ives, M. Nimsand, C. Bauer, Second Row: R. Peterson, M. Schultz, J. Margan, J. Smith, C. Page, K. Otto, M. Gunderson, J. Johnson, J. Peterson, J. Pedersen, E. Rich, Front Row: J. Blaha, S. Mason, E. Rude, M. Martin, J. Tierman, D. Calligan, B. Johnston.

Kinder - garten



Back Row: Miss Ripperger, M. Hopkins, S. Erickson, S. Martin, R. Landmesser, K. Weishaar, B. Christensen, P. Johnston, K. Vainreb, S. Ricklefs. Second Row: L. Tutt, J. Cooksey, J. Truelson, M. Tutt, K. Zeman, R. Accurso, J. Dielefeldt, M. Hood, M. Long, D. Diederich, L. Kennedy. First Row: R. Turley, K. Haynes, D. Horsman, J. Martin, J. Lowe, T. Olerich, D. Peters, M. Struthers, M. Sroufe.

This page sponsored by N. A. (IHO) WILSON, Selfe, Jan.

Junior - Senior Banquet

MENU

"And the night shall be filled with
music"

Chilled Pineapple Juice

Swiss Steak Whipped potatoes

Peas in Timbales April Salad

Gloverleaf Rolls Jelly

Relish Plate

Strawberry Shortcake

Coffee

Nuts



TOAST PROGRAM

"On Wings of Song"

The Maestro R. O. Mortensen
"By the Bend of the River"
-----Eddie Shelgren
"Because"-----Ronald Shimon
"The Rosary"-----Miss Nolan
"Where My Caravan has Rested"
-----Jon Olerich
"Auf Wiederschen"-----Gary Clark



This page sponsored by CHARLTON GRAIN CO., INC., Rolfe, Iowa

Des Moines Trip



Senior Breakfast

May 17, 1955

MENU

Ham	Eggs
Toast	Jelly
Rolls	Coffee
Pineapple Sherbet	



Class Night

PROGRAM OF EVENTS

May 17, 1955

1. Grand entrance of the Senior Class
2. Call to Order Supt. Mortensen
3. Senior Class--Review of past four years' hi-lites John Prehn
4. Reading of the Class History John Prehn
5. Reading of the Class Will Gloria Nielsen
6. Reading of the Class Prophecy Virgene Thorson
Acc. by Kenton Kerns as Joe Friday
7. Presentation of Jr. High Athletic Awards Mr. Grace
8. Presentation of Music Awards Mr. Kloster
9. Presentation of Athletic Awards Mr. Martin
10. Presentation of Cheerleader Awards Mr. Mortensen
11. Presentation of Speech Awards Mr. Mortensen
12. Presentation of Activity Awards Mr. Mortensen
13. Iowa Bar Association Award Mr. Hudson
14. Scholarship Medals to Underclassmen Mr. Mortensen
15. DeKalb Award Mr. Shires
16. Rolfe State Bank Awards--Vocational Agriculture Mr. Dixon
17. H. C. Wiegman Memorial Award Mr. Mortensen
18. Salutatorian and Valedictorian Awards Mr. Mortensen
19. Senior Song and Exit



This page sponsored by BRINKMAN STANDARD SERVICE, Rolfe, Iowa

Baccalaureate

Processional	Gary Clark
"Grand March"--Tannhauser--Richard Wagner	
Invocation	Rev. Mr. Martin J. Prehn
Baritone Solo	Bruce Prehn
"O, Rest In The Lord"--Mendelssohn	
Sermon	Rev. Alton Christensen
"The One Way"	
Music	Mixed Chorus
"Lamb of God"--Christensen	
"Now The Day Is Over"--Barnby	
Benediction	Rev. Mr. Martin J. Prehn
Recessional	Gary Clark
"Grand March"--Tannhauser--Richard Wagner	

Commencement

Processional	Gary Clark
"Pomp and Circumstance"--Elgar	
Invocation	Rev. Mr. O. M. McQuary
Vibra-Harp Solo	Ivan Mortensen
"Evening Prayer"--Engelbert Humperdink	
Introduction of the Speaker	R. O. Mortensen
Superintendent of Schools	
Address	Dr. Charles E. Friley
"The Quality of Education"	
Baritone Solo	Gary Clark
"Count Your Blessings" by O'Hara	
Presentation of the Class	R. O. Mortensen
Superintendent of Schools	
Presentation of Diplomas	M. L. Robinson
President, Board of Education	
Music	Chamber group of Woodwinds
"Minuet," Willan	
Benediction	Rev. Mr. O. M. McQuary
Recessional	Gary Clark
"Pomp and Circumstance"--Elgar	

Valedictorian--John Prehn
Salutatorian--Ronald Shimon

Class

"Year after year beheld the silent toil
That spread his lustrous coil;
Still, as the spiral grew,
He left the past year's dwelling for the new,
Stole with soft step its shining archway through,
Built up its idle door,
Stretched in his last-found home and knew
the old no more."

History

With these lines from Holmes' "The Chambered Nautilus" we begin the History of the Rolfe High School Class of 1955. The nautilus is a sea animal much like a snail. It lives in a spiraled shell which grows year by year. Each year as the nautilus grows, it must leave behind that part of its shell which it occupied the year before and build itself a new and larger chamber.

So it has been with the Class of 1955. In 1942 five of the present members built the first chamber. They were Pat Cox, Ronald Shimon, Jerome Farlow, George Swan, and Juanita Snook. Their foreman was Lois Yoder.

Each year as the class moved on and grew, larger chambers were necessary. Bill Kemna, Larry Kerns, Shirley Peterson, Elwyn Burns, and Beryl Wickre were added to the group of builders at the second chamber with Gladys Altman as their leader.

Gary Clark was the only new workman added during the building of the third chamber. The new director of construction was Veronica Tussing.

No new builders were added at the time of the construction of the fourth chamber, but a new leader, Marilyn Hull, replaced Miss Tussing.

Harvey Applegate, the next worker to join the group, arrived with the foreman, Doris Reynolds, at the time of the building of the fifth chamber.

The sixth chamber was built with the additional help of Glenn Markley, Larry Snook, and Donald Onnen. The leader was Mrs. Ruth Stoner.

The seventh, eighth, and ninth chambers were built with the addition of Gloria Nielsen, Carolyn Schoon, Marlene Struthers, John Prehn, and Carl Dougherty. The directors were George Smith and Darvin Stover, who took over in the ninth chamber.

The tenth chamber was built under the guidance of Edna Marcum. During that time Ronald Gardewine and Bud Patterson were the only workers added to the group.

As we leave these chambers and proceed to build next, we think of these closing lines from "The Chambered Nautilus".

"Build thee more stately mansions, O my soul,
As the swift seasons roll!
Leave thy low-vaulted past!
Let each new temple, nobler than the last,
Shut thee from heaven with a dome more vast,
Till thou at length art free,
Leaving thine outgrown shell by life's unresting sea!"

This page sponsored by JOE LEHMAN PRODUCE, Rolfe, Iowa



M. Patterson



B. Wickre



M. Struthers

How We Looked Then



L. Snook



W. Kemna



G. Nielsen



E. Burns



S. Peterson



D. Onnen



P. Cox



L. Kerns

J. Prehn



This page sponsored by DICK'S "66" SERVICE, Rolfe, Iowa

Class Will

In the name of Wisdom, and so be it. We, the class of 1955 of the town of Rolfe, Pocahontas County, and the State of Iowa, do here-by, being of sound and disposing memory, (we linger on the memory) make, publish and disclose this, our last will and testament, in order as justly as we may, to distribute a few tokens which we have acquired by 4 years of effort, for the education and general welfare of the student body, faculty, and general public.

ITEM--First to our Followers, the Juniors, a carload of experience in publishing an annual.

ITEM--To the Sophomores, we leave, yea willingly, all of our advice, based on four years of actual hard-earned, relentless experience.

ITEM--And to our Freshmen brothers all the meadows and clover blossoms, the birds, the hills, and the ponds.

ITEM--To the following individuals:

I, Elwyn Burns, will my F.F.A. work and judging ability to Jack DeWolf. Maybe you'll receive a scholarship, too, Jack.

I, Harvey Applegate, bequeath my good times at Bradgate to Kenny Shaw. Have fun Kenny, I did.

I, Marlene Struthers, will my ability to giggle at anything to Janet Cuthbertson. We will be looking for some smiles, Janet.

I, Carolyn Schoon, bequeath my good times at dances and my Mallard friends to anyone. Have fun I did.

I, Larry Snook, will my ability to get I's in the Humorous section in declam to Charlotte Applegate. May you make good use of it.

I, Gary Clark, will my piano playing to Bruce Prehn in hopes that he receives a "I" in contest next year.

I, Glenn Markley, leave all the fun I had in my senior year to my sister, Inez. Just keeping it in the family.

I, Larry D

I, Larry Kerna, will my ability to play the saxophone to Jeanie Robinson.

I, Pat Cox will my walk to anyone who would take it. I don't want it.

I, Bud Patterson bequeath my lunch room duties to Greg Kaiser. Do a good job, Greg.

I, Bill

I, Bill Kemna, will my cheerful disposition to anyone who needs it.

To Joel Freeman, I, Carl Dougherty, will my week-end trips to Minnesota. I hope you make it back earlier than I ever did.

I, Donald Onnen, will my height to Paul Johnson, who could use it.

I, John Prehn, bequeath my first chair in the cornet section to John Mortensen. Good Luck!

I, Ronald Shimon, will my collection of guns to Eddie Shalgren. Be careful, they're dangerous!

George

I, George Swan, will my ambitious looks to Arlen Hermansen. Need we say more?

I, Jerry Farlow, bequeath my ability to run the $\frac{1}{2}$ mile in 2:08 to Larry Pullen. Good Luck!

I, George

I, Ronald Gardewing will my blushing to Carroll Peters, who seems already to have his share.

We, Gloria Nielsen and Beryl Wickre, the gold dust twins, will our friends and good times at Pocahontas to ourselves since we want to these memories with us.

I, Juanita Snook, will my letter writing to Monica Miller. Don't run out of stamps, Monica.

I, Shirley Peterson, will my quiet ways to Esther Fevold.

Last but not least, we, the Senior Class of 1955, will to the entire high school our well-known abilities in the classroom and on the athletic field, and to the faculty, pleasant memories of the class that meant to do well and holds no grudges.

We here-by appoint Mr. Mortensen, Senior Class sponsor, executor of this last will and testament. In witness thereof, we, the Senior Class of 1955, the testators, have to this, our last will and testament, set our hands and seal, this 17th day of May, 1955, A.D.

Witnesses:

Beryl Wickre
Gloria Nielsen
Carolyn Schoon

Class Prophecy



This is the authentic story of the senior class of 1955 in action.

We, the juniors, have been assigned to investigate the robbery of the Old Rolfe High Spirit, stolen by the class of '55. Our job--find it!!



It was in the spring of 1965 when we left Rolfe by the Rolfe--San Francisco Airlines. Near--ing San Francisco, our plane developed engine trouble, and we were forced to make an emergency landing, finding ourselves on Angel Island. After signalling San Francisco for help, we decided to do a little exploring. To our surprise, whom should we discover but Beryl Wickre. It seems that Beryl had become tired of the Pocahontas civilization and had turned to being a lady hermit.

As soon as we left Angel Island, we immediately went to Hollywood. We entered the T. B. O. studio, which was in the process of filming "The Multifarious Mendacious Menagerie" starring Marilyn Monroe and the latest screen success, Francis Jeffery, who was later introduced to us as our own Larry Snook. After our having told Larry of our assignment, he gave us a list of his old classmates and their residences, since they are all his ardent fans.

Upon the purchase of a new 1965 Chrysler Millionaire, we continued our journey eastward, checking our list as we went along. We found ourselves speeding through a little town in Nevada and were immediately stopped by a policewoman on a motorcycle whom we recognized as none other than Gloria Nielsen. Being our friend, she let us continue on our journey without any further difficulty.

Our next stop was the ranch of Mr. and Mrs. Donald Onnen near Tombstone, Arizona. Upon greeting Donald, we were invited inside to meet his charming wife, whom we formerly knew as Shirley Peterson. After spending an enjoyable weekend amid the pleasures of a ranch, we departed for Wolfhole, Utah, to contact Harvey Applegate. Harvey, who now holds the honor of sheriff of Wolfhole, is held in high respect by all the citizens.

Climbing the Ozark Mountains in Arkansas, our car developed engine trouble; and seeing no possible way of getting help, we decided to start walking. After walking for several miles, we rounded a curve and were relieved to find a gas station owned and operated by Glenn Markley and Bill Kemna. Being expert mechanics, they soon fixed our car and we were on our way again.

Our next stop was Chicago--the windy city. Knowing Ronald Shimon to be somewhere in the vicinity, we went in search of him. We traveled from night spot to night spot until we came upon a flashing neon sign reading "Ronald's Rhythmical Rovers." There we spent an enjoyable evening listening to the smooth music of his wonderful dance band.

Leaving Chicago, we were confronted with the problem of crossing Lake Michigan in order to reach the town of Snowflake in the northern part of the state of Michigan. This was accomplished by the use of a ferry. We then went to the combined company of Quaker Oats and General Mills in their new location at Snowflake. Among the thousands of workers employed was one of the objects of our search. After visiting with John Prehn, we learned that he was trying to work his way up from the bottom like a typical American boy by pulling the string of the cannon that puffs wheat for that delicious cereal called Puffed Wheat.

It was rather difficult to find Gary Clark. In fact, we were forced to leave the car and continue our search by mules. Gary is now living on a mountain top in Tennessee. He was so inspired by the Ballad of Davy Crockett that he literally "lit out a grinning to follow the sun."

In Washington, D. C., we found Jerry Farlow, who has retained the laundry skill he obtained in high school during the basketball season and now heads the President's own personal laundry.

On to New York and Carl Dougherty, who is the greatest scientific discoverer since Einstein. He has just released his newest discovery of Exclonosive Prelon, or--in simpler terms--the process of cooking without heat. We discussed the remainder of our journey with Carl, and with his influence obtained a rocket ship from his company and prepared to depart for the outer space.

(Continued on page 64)

This page sponsored by E. O. LOXTERKAMP, M. D., Rolfe, Iowa

Prophecy

(Continued)

Just as we were about to leave, we remembered the wrestling match to be held at Madison Square Garden that night. Not wanting to miss it under any circumstances, we postponed the trip a day. It seems that Juanita Snook has vowed to marry anyone who is able to pin her in less than three minutes. This is Murderous Merlin's (commonly known to us as Bud Patterson) thirteenth try to win her hand. Juanita always gets him with that famous Levi Squeeze.

After seeing this thrilling bout, we boarded our rocket ship and before long found ourselves nearing the moon. George Swan is one who evidently took the saying, "Do you want to go to the moon?" seriously because that is exactly what he did. We always knew that someday our friend George would go far. Larry Kerns, who is always unequalled in everything he does, began working as soon as he got out of school in perfecting a super jet to excel all speed records for the next century. We found it rather hard to manage an interview with this amazing character because he lands so seldom; and when he does, it is for seconds only. Luckily, while we were on the moon visiting George, he whizzed in for a slight refueling, which is necessary every two years. He was on an errand to Pluto so could not stay more than three seconds at the most.

When we got back to earth, we were greatly disturbed by a blast from the radio informing us of the whereabouts of our old friend Marlene Struthers. It seems that Marlene's City Slavs had just overthrown the Russian Kremlin by a surprise attack, using oversized squirt guns.

(Music) 

Where would we find Carolyn Irresistible Schoon but working in Korea at a USO. Carolyn's job is to find activities for the soldiers during their spare time, and it seems that some really take advantage of the excellent services offered. Elwyn Burns seems to have a little bit too much idle time and is one of her most ardent and frequent visitors.

Our journey was coming to a fast close with only two classmates unaccounted for. Once again we saw the familiar streets of Rolfe; and being extremely hungry, we decided to stop at Casey's 'Burger Shop for one of those famous 'burgers. We sat down in a booth which already had one occupant, and immediately placed our order. Upon conversing with this individual, who identified himself as Pat Cox, the same carefree boy we had known in high school, we learned that he still spends his leisure time trying to solve the Cashword puzzle. Our orders were soon delivered by the one and only Ronald Gardewine, who now was the chief cook at Casey's 'Burger Shop. From him we obtained the last of the valuable school spirit which we had lost so many years ago. His contribution ended our search, and we reported our mission successfully accomplished.

(Music) 

This report had been taken from the files of R. H. S. Bureau of Investigation, under the direction of detectives:

Virgene Thorson

Carol Simonson

Joseph Reckard



Junior Float Preparations



Caroling



Homecoming Pep Bonfire



Scenes from the Christmas Program



Banquet Arrivals



Snapshots



Awaiting the Dinner Call

Will it work?



Having Fun

Looking Out





Shirley Peterson
Quietest



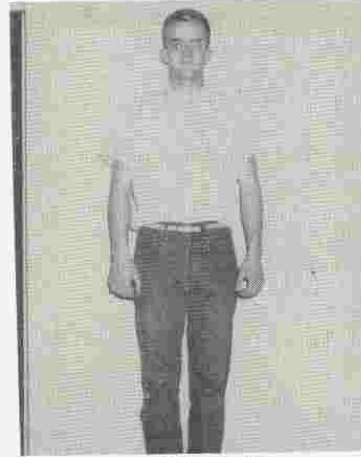
Carolyn Schoon
Friendliest



Juanita Snook
Biggest Flirt



Ronald Shimon, Carolyn Schoon
Best Dancers



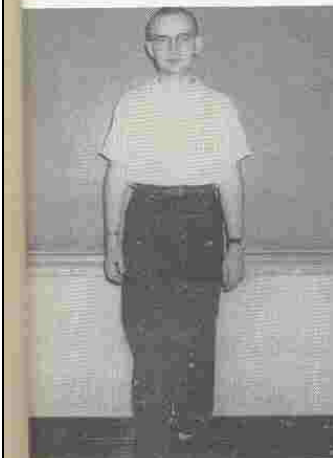
John Prehn
Outstanding Person
Most Courteous
Sanest Driver



Beryl Wickre
Most Talkative

Our

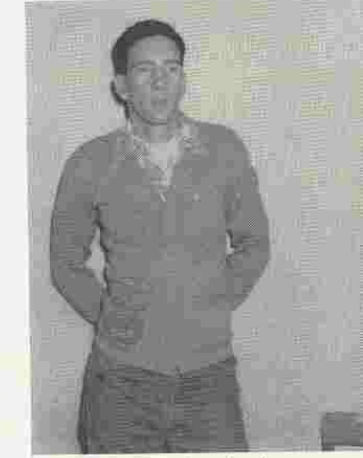
Opinions



Gary Clark
Most Musical



Jerry Farlow
Best Sport



Carl Dougherty
Most Athletic

This page sponsored by THE ROLFE ARROW, Rolfe, Iowa

School Staff



Secretary
Mrs. Leon Erickson



Custodians
Howard Sandy, John Hopkins



Bus Drivers
Left to Right: Paul Kerns, Howard Sandy,
Dick Higgins, John Hopkins, Gordon Mehaffey



Cooks
Mrs. Lester Ferden, Mrs. John Tiernan,
Mrs. Gordon Mehaffey, Mrs. George Marine